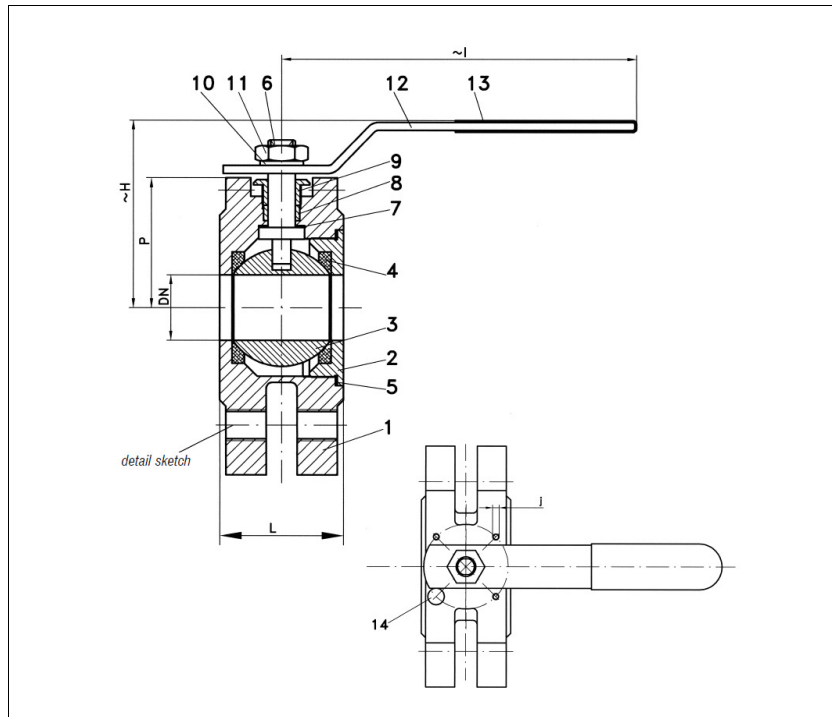


BALL VALVES RK-PROBALL

KH 1T W, 1/2" - 4", PN16



Wafer type ball valve

full bore

face to face acc. to producers standard
flanges acc. to EN 1092

Specification:

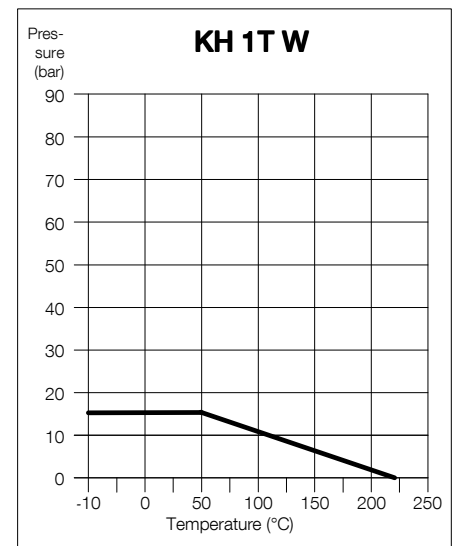
One-piece ball valve with flanges acc. to EN 1092, face to face dimensions acc. to producers standard, full bore, blow-out proof stem, body material stainless steel (1.4408), free of non ferrous metals, seat KFG/KFM, stem packing KF, design acc. to EN 19, design of the actuator connection refers to DIN/ISO 5211, approved by PED, with lever.

Marking: RK-Proball

Type: KH 1T W-1.4408

Kugelhähne RK-Proball KH 1T W of all sizes are also available with pneumatical, electrical or hydraulic actuators.

No.	Part	Material
1	body	1.4408
2	body screw	1.4408
3	ball	1.4408
4	seat	KFG/KFM
5	body seal	PTFE
6	stem	1.4401
7	seal	PTFE
8	stem packing	KF
9	gland nut	1.4301
10	thrust washer	1.4301
11	nut	1.4301
12	lever	1.4301
13	insulation cover	Vinyl
14	stopper	1.4301



Dimensions

DN mm	DN inch	dimensions (mm)					L	P	top flange ISO	torque Nm	weight kg
		H	I	j	M	N					
15	1/2	70	145	M5	34.5	34.0	F3	10	1.25		
20	3/4	80	140	M5	38.5	37.8	F3	15	1.75		
25	1	82	155	M5	44.5	45.5	F4	20	2.20		
32	1 1/4	91	173	M6	54.0	51.5	F5	30	3.40		
40	1 1/2	110	187	M6	62.0	57.1	F5	35	4.10		
50	2	118	187	M8	72.0	65.0	F5	45	5.30		
65	2 1/2	133	250	M8	104.0	84.5	F7	75	6.80		
80	3	155	250	M8	118.0	90.6	F7	90	9.20		
100	4	185	250	M8	150.0	108.0	F7	140	14.60		

Ordering example:
KH 1T W, 2", PN 16, 1.4408

06/2016

Subject to modification.